

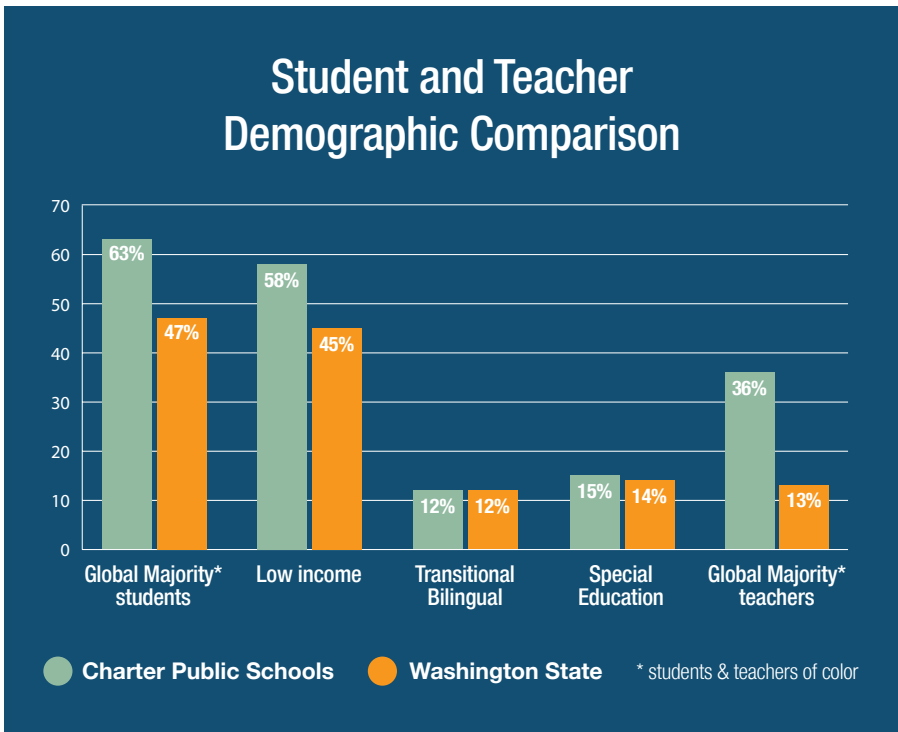


ENSURING EQUITABLE PUBLIC SCHOOL OPTIONS FOR WASHINGTON STUDENTS

Charter public schools are an important part of the Washington public school system. They are tuition-free, open to all students, and overseen by public agencies. Because of their flexible models, charter public schools are uniquely equipped to respond to emerging needs. They have successfully pivoted to reach students during the COVID-19 crisis, and our state’s charter public schools are on the leading edge of implementing anti-racist curriculum, social emotional learning, and inclusive practices.

We are the Washington State Charter Schools Association (WA Charters), a statewide nonprofit organization that advocates and supports innovative and equity-driven charter public schools.

ABOUT WASHINGTON’S CHARTER PUBLIC SCHOOLS



99%
Percent of WA charter high school graduates accepted to college

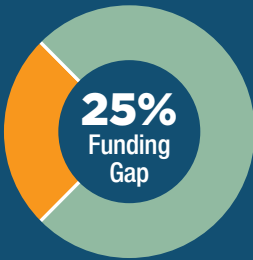
3,600
Number of students currently attending WA charter public schools



OUR TOP ADVOCACY PRIORITIES

Funding Equity

Washington's charter public schools attract and serve disproportionately high percentages of Global Majority students (i.e., students of color) and students from low-income households, and they also serve high percentages of students who receive special education services and Transitional Bilingual students. However, charter public school students receive up to \$3,000 less per student each year than their peers who attend traditional public schools. The **average student at a Washington charter public school receives 25% less in funding** than a student at a traditional public school.



Because charter public schools educate a higher percentage of systemically underserved students, **this funding gap means fewer resources for students who need that funding most. This is fundamentally unfair.**

Facilities Funding

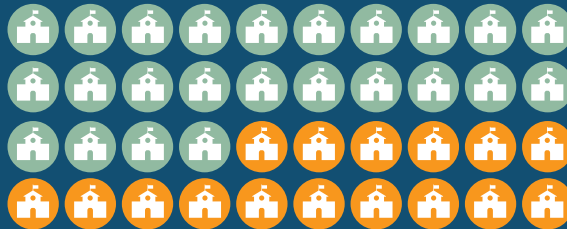
Unlike traditional public schools, WA's charters do not have dedicated funding for facilities. As a result, about 10% of charter budgets, **intended to support teaching and learning, go to facilities.**

Special Education

Together with other public education advocates, **we are passionate about improving special education services** for all students in our state who qualify for them.

More Time to Open New Schools

State law allows for up to 40 charter public schools to be established over 5 years. This five-year window is coming to a close in 2021, and we need the legislature to extend it. **Extending the five-year authorizing window would provide additional time to fulfill the intent of the legislature and the voters, and would expand opportunities for systemically underserved students.**



Voters Support Charter Public Schools

An October 2020 poll of WA voters found that:

78%

A **large** majority of voters (58%) are supportive of charter public schools. After hearing basic facts about charter schools, support **jumps 20 points to 78%.**

75%

Two-thirds of voters (67%) also support additional state funding for charter schools. This **increases to 75%** after voters learn more about why funding equity matters.

78%

More than 7-in-10 (72%) of voters believe in extending the five-year authorizing window to allow additional time to open new charter schools. After hearing more, support **rises to 78%.**

For more information, please contact:

Natalie Hester | Chief Policy Officer

Washington State

Charter Schools Association

206.356.7078 | natalie@wacharters.org

 wacharters.org

 [wacharters](https://www.facebook.com/wacharters)

 [@wa_charters](https://www.instagram.com/wa_charters)